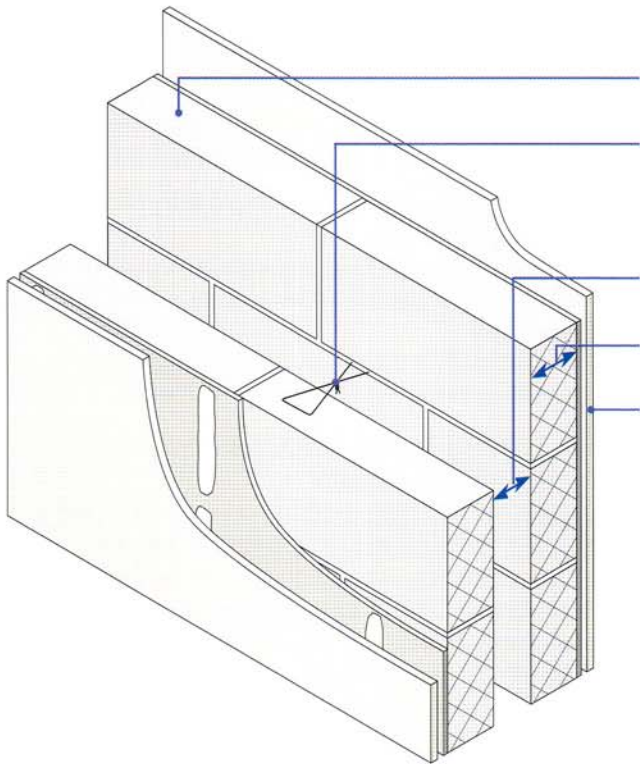


- Lightweight aggregate blocks
- Render and gypsum-based board on dabs



Block density	1350 to 1600 kg/m ³
Wall ties	Approved Document E 'Tie type A' (see Appendix A)
Cavity width	75mm (min)
Block thickness	100mm (min), each leaf
Wall finish	Gypsum-based board (nominal 8kg/m ²) mounted on dabs on cement:sand render (nominal 8mm) with scratch finish Typical render mix 1:1:6 to 1:1/2:4. Render mix must not be stronger than background (see Appendix A)
External (flanking) wall	Masonry (both leaves) with 50mm (min) cavity – clear, fully filled or partially filled with insulation

DO

- Keep cavity and wall ties free from mortar droppings and debris
- Fully fill all blockwork joints with mortar
- Make sure there is no connection between the two leaves except for wall ties and foundation
- Keep any chases for services to a minimum and fill well with mortar
- Ensure that render is applied to the complete face of each leaf with a scratch finish (it may be omitted within the floor joist/beam zone)
- Refer to Appendix A