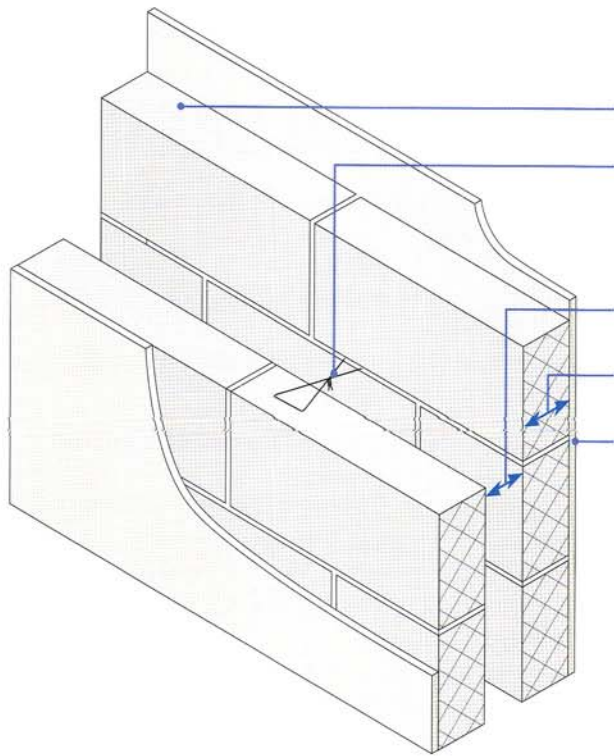


Lightweight aggregate blocks ■
Wet plaster ■



Block density	1350 to 1600 kg/m ³
Wall ties	Approved Document E "Tie type A" (see Appendix A)
Cavity width	75mm (min)
Block thickness	100mm (min), each leaf
Wall finish	13mm plaster or cement: sand render with plaster skim (min 10 kg/m ²), both sides
External (flanking) wall	Masonry (both leaves) with 50mm (min) cavity – clear, fully filled or partially filled with insulation

DO

- Keep cavity and wall ties free from mortar droppings and debris
- Fully fill all blockwork joints with mortar
- Make sure there is no connection between the two leaves except for wall ties and foundation
- Keep any chases for services to a minimum and fill well with mortar
- Select an alternative robust detail where flues are required in the separating wall e.g. for lightweight aggregate blocks, see E-WM-4
- Refer to Appendix A